

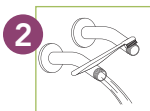
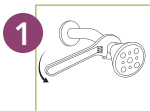
# How to Install Your New Energy Efficiency Upgrades

Thank you for choosing to save energy and water.

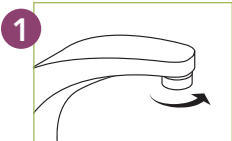
These instructions are provided to assist you with the installation of your high efficiency showerhead and faucet aerators.

## Showerhead

You'll need: pliers or adjustable wrench, cloth, plumber's tape.

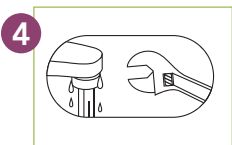
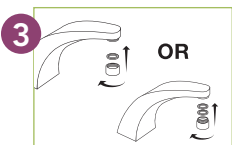
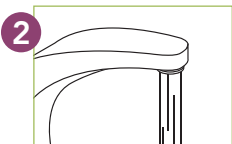


1. Remove the old showerhead. Most can be unscrewed by hand; if not, use a wrench or pliers. Be sure to unscrew the showerhead slowly and hold the water supply line while doing so. A sudden jerk could break the supply line. Use a cloth to protect the finish.
2. Clean the shower arm threads, then turn on the water to wash out the pipe.
3. **TURN OFF WATER.** Insert the included washer into the showerhead to prevent leaks.
4. Attach the new showerhead to the shower arm by turning clockwise—use a wrench if necessary, making no more than a 1/4 turn with a wrench. Use a cloth to protect the showerhead's finish. **DO NOT OVER-TIGHTEN.**
5. Your showerhead comes with multiple spray patterns, including a full body spray, massage spray, and pause for soaping up or shaving. **To change spray pattern:** Rotate spray face to select the desired pattern.
6. **To clean:** Your Evolve Showerhead has easy-to-clean, anti-clog spray nozzles. To remove mineral deposits, simply glide your finger along the nozzle tips while the showerhead is running.



## Faucet Aerators

**You'll need:** adjustable wrench, cloth, rubber washer(s).



1. Remove the old aerator from the faucet. Use a wrench if needed. Use a cloth to protect the finish.
2. Turn on the water to wash out the faucet.
3. **TURN OFF WATER.** Screw on the new aerator and hand-tighten.
  - **For outside-threaded faucets:** Discard upper washer. With lower washer in top of aerator, screw aerator onto outside threads.
  - **For inside-threaded faucets:** Place upper washer on lower washer in top of aerator and screw aerator into inside threads of faucet.
4. Turn on the water. If the aerator leaks, use the wrench to tighten until snug. Use a cloth to protect the finish. **DO NOT OVER-TIGHTEN.**

**Note:** A slight stream of water will flow from your aerator when the flip valve is in the off position. This is normal and part of its anti-scalding feature.

**To clean:** Remove the aerator and rinse the parts.



Don't forget to show off your energy-saving skills at **Fuzzy's Fun Zone**. Play along at [socalren.org/energymonsters](https://socalren.org/energymonsters).

*SoCalREN and ICF are not responsible for damages caused by the installation of the contents of the kit.*