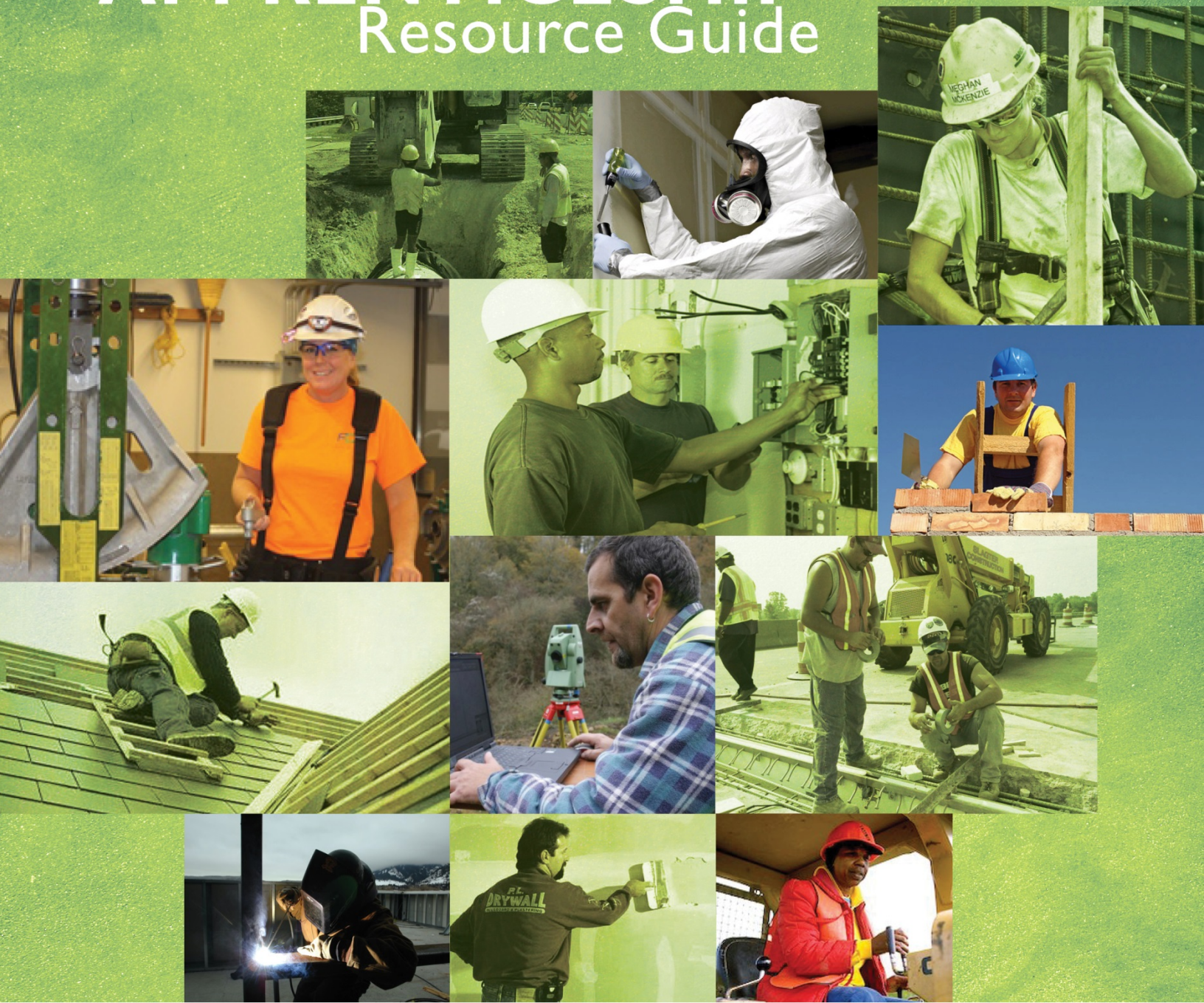


APPRENTICESHIP Resource Guide



Emerald Cities
COLLABORATIVE

1140 Connecticut Ave. NW
Suite 1210
Washington, DC 20036

Introduction

WHAT IS APPRENTICESHIP

Apprenticeship programs prepare individuals to become a highly trained and skilled journeyman/woman and to ensure that individuals are prepared to meet the competitive challenges of today's global market economy.

EARN AS YOU LEARN

Apprenticeship is classroom and on-the-job paid training! Students learn and practice all phases of their specialized craft.

EXPERTS IN THE FIELD

The apprenticeship programs train men and women to become experts in their specialized field.

The benefits of the union apprenticeship programs include the opportunity to earn while you learn; state-of-the-art training; career advancement opportunities; excellent wages and benefits; safe working conditions; and pride and dignity.

PREREQUISITES AND REQUIREMENTS

Each union apprenticeship has different eligibility and admission requirements. Generally, to be eligible, you must be at least 18 years of age; able to perform the work of the trade; and you may also be required to present verification of a high school diploma or GED certificate. You may also be required to demonstrate the ability to read, write, and speak English to comprehend instructions in related training classes and ensure safety on the job.

THE SKY IS THE LIMIT

There are many apprenticeship programs to choose from—get on the path to success today!

Table of Contents

Boilermaker	4
Bricklayer	5
Carpenter	6
Cement Mason	7
Drywall/Finisher	8
Electrician (Inside Wireman)	9
Floor Layer	10
Glazier	11
Heat and Frost Insulator/Asbestos Worker	12
Laborer	13
Landscape and Irrigation Fitter	14
Operating Engineer	15
Painter	16
Pile Driver, Bridge, Wharf, and Dock Builder	17
Plumbers	18
Refrigeration and Air Conditioning Fitter	19
Reinforcing Ironworker	20
Roofer and Waterproofer	21
Sheet Metal Worker	22
Steam Fitter/Pipe Fitter	23
Structural Ironworker	24
Sound and Communication	25
Surveyor	26
Tile Finisher and Marble Finisher	27
Transportation Systems	28

Boilermaker

Skills To Be Learned

The boilermakers trade involves the fabrication, installation, modification, and repair of boilers, hydro dams, tanks, pressure vessels, petroleum refineries, chemical plants, paper mills, steel mills, food and beverage plants, furnaces, and associated equipment, such as stacks and platforms based in power plants.

The skills required of a construction boilermaker include reading blueprints, rigging heavy loads, burning, welding layout, fabricating metal parts, and often working in high places in excess of 100 feet.

Wages

Hourly wages for entry-level apprentices start at \$29.34. Hourly wages for journeymen start at \$42.16.

Benefits

Health and welfare, vacation, annuity, and pension plans.

Contact

Boilermakers Apprenticeship

Alfredo Leyva, Apprenticeship Coordinator
alfredo.leyva@boilermakerslocal92jac.org

2260 Riverside Ave.
Bloomington, CA 92316
Phone: (909) 877-9382
Fax: (909) 877-8318

www.boilermakerslocal92.com

When To Apply

First Wednesday of every month from 7 a.m. to 3:30 p.m.

Length of Program

Some requirements that a boilermaker apprentice must meet within four years to become a Journeyman include completion of 576 hours of classroom instruction, 48 self-study lessons, and 21 on-the-job modules on boilermaker fundamentals.

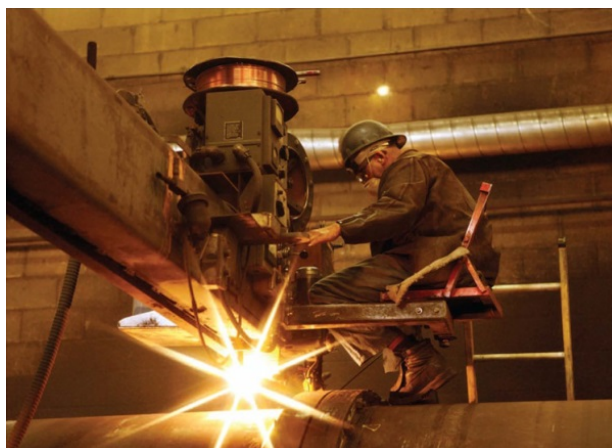
Performance based testing prior to advancement. Minimum 6,000 work hours and 2,000-hour probation period.

Requirements

Apprenticeship applications are available the first Wednesday of each month at Local 92. To apply, you must be 18 years of age, and have a high school diploma or GED.

Union

International Brotherhood of Boilermakers, Iron Shipbuilders, Blacksmiths, Forgers, and Helpers Local Union



Bricklayer

Skills To Be Learned

Bricklayers build walls, chimneys, and other structures from masonry units such as brick, block, glass block, or stone as well as brick, stone, and marble paving systems. They also line industrial kilns and furnaces, and may work in sewers. Generally, the bricklayer's technique is to spread the bottom and side of each unit with mortar and position it by hand, cutting off excess mortar and later trimming it to achieve a neat appearance. Work is kept level by use of a tightly stretched line and must be checked frequently for level and plumb. Some units must be cut to fit. Bricklayers often work from scaffolding and the work, especially block work, is often strenuous. In a related trade, the pointer-cleaner-caulker (PCC) patches weathered masonry, replaces old mortar, and does caulking, waterproofing, and cleaning of both new and old masonry. They often work on swing scaffold 20+ stories high.

Wages

Hourly wages for entry-level apprentices start at \$13.65. Hourly wages for journeymen start at \$41.39.

Benefits

Health and welfare, vacation, annuity, and pension plans.

Contact

Brick Masons Apprenticeship and Training

2679 Sierra Way
La Verne, CA 91750
Phone: (626) 739-5600
Fax: (626)739-5610
<https://www.bac4ca.org>

When To Apply

Applications are accepted on the first Thursday of the month. The process includes an orientation session from 11 a.m. to noon. Call for an appointment.

Length of Program

Typically, your apprenticeship will consist of 6,000 hours on-the-job for eight periods, or 4,500 hours for six periods in PCC. After each period, you are evaluated for a wage increase, provided you also have completed the required hours in related classroom instruction.

Requirements

You must be 18 years or older, able to lift 50+ pounds continuously, and work on staging above ground. Currently, we do not require a high school diploma or GED.

For PCC, you must be able to work on swing staging many stories high and no fear of heights.

Willing and able to attend school two Saturdays per month.

Union

Bricklayers and Tile Layers Local 4



Carpenter

Skills To Be Learned

Through on-the-job and related supplemental instruction, this apprenticeship program provides training in all phases of residential, commercial, and industrial construction. The program includes structural framing, blueprint reading, layout, finish hardware installation, and all form work for concrete. Specialty areas include millwrights, pile drivers, drywall/acoustical, and cabinet makers.

Wages

Hourly wages for pre-apprentice level positions start at \$16.16. Hourly wages for commercial journeymen start at \$40.40.

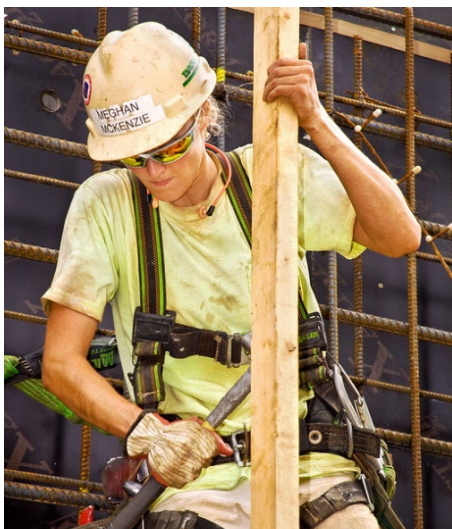
Benefits

Health and welfare, vacation, and pension plans.

Contact

Southwest Carpenters Training

Louis Ontiveros, Director
533 S. Fremont Ave., Suite 401
Los Angeles, CA 90071-1706
Phone: (213) 385-1457



When To Apply

Monday through Friday, 8 a.m. to 4 p.m.

Length of Program

The minimum term of apprenticeship requires 48 months, 4,800 work hours, and completion of 612 hours of related instructional classes taken at a Carpenters Training Center.

Requirements

An applicant for the Carpenters Training Program must be at least 18 years old or 17 years old with written parental consent. There is no maximum age.

Applicant must be in good health and physically able to perform all phases of the work.

Applicant must have their own transportation or a reliable way to get to job sites and apprenticeship classes.

Applicant must be able to read and understand the English language in order to comprehend instructions on the job and in related training classes, and to ensure personal and co-worker safety on the job.

Applicant must complete all application forms and provide evidence of legal employable status in the United States of America.

Union

The Southwest Regional Council of Carpenters, an affiliate of the United Brotherhood of Carpenters and Joiners of America. Locals include 150, 209, 409, 440L, 547, 630, 721, 743, 803, 944, 1506, 1607, 1800, 2007, 2361, and 2375.

Cement Mason

Skills To Be Learned

Apprentices will learn how to perform all phases of concrete finishing, including but not limited to preparation; demolition; concrete sawing; stamped and stained concrete; and green concrete construction including, but not limited to pervious and polished concrete setting screeds, forms, layout, and mixing materials. The apprenticeship program provides training on setting up finish steps, cove base, curb and gutter, stamp concrete, and decorative finishes. The program also provides instruction on troweling, edging, tamping, jointing, sacking, patching, dry packing, repairs, and preparations. Other training areas include machine operating, concrete sawing, epoxy, and epoxy injection.

Wages

Hourly wages for entry-level apprentices start at \$17.25. Hourly wages for journeymen start at \$34.50.

Benefits

Health and welfare, vacation, pension plans, and individual retirement account.

Contact

Southern California Cement Masons Joint Apprenticeship

Ed DeBrito, Apprenticeship Coordinator

Phone: (626) 523-2828

ewdebrito@gmail.com

5417 Peck Road

Arcadia, CA 91006

Office: (626) 444-4600

Fax: (626) 258-4092

<https://www.cmscapprentice.org>

When To Apply

Monday through Friday, 8 a.m. to 4 p.m.

Length of Program

The four-year program requires 4,800 hours of on-the-job training (600 per semester) and 80 hours of classroom instruction per year.

Requirements

Applicants must be at least 18 years of age. You will be required to provide proof of age. There is no maximum age.

Union

Locals 500 and 600



Drywall/Finisher

Skills To Be Learned

Learn to finish wallboard to a uniform surface for painting or wall covering finish. Do this by learning to mix joint compound, embed tape, and apply additional coats of compound over it to provide a smooth uniform surface using a combination of hand and automatic tools. You will also learn to use spray texture equipment to further enhance the surface.

Wages

Hourly wages for entry-level apprentices start at \$16.18. Hourly wages for journeymen start at \$37.18.

Benefits

Health and welfare, vacation, education and legal assistance, annuity, and pension plans.

Contact

Southern California Painting and Drywall Industries Apprenticeship

David Burtle, Director
Janet Pineda, Drywall Coordinator
7020 E. Slauson Ave.
Commerce, CA 90040
Phone: (323) 727-2811
Fax: (323) 727-1180

When To Apply

Monday through Friday, 9 a.m. to 4 p.m.

Length of Program

A three-and-a-half-year program or 5,400 hours of on-the-job training. Must complete a total of 160 class hours a year.

Requirements

Must be 17 years of age, and physically able to do the job.

Union

International Union of Painters and Allied Trades (IUPAT)



Electrician (Inside Wireman)

Skills To Be Learned

Apprentices will learn to install, maintain, and repair many types of electrical equipment and electronic systems in residential, commercial, and industrial establishments. Apprentices will also learn lighting, power, and controls in any premise.

Wages

Hourly wages for entry-level apprentices start at \$16.80. Hourly wages for journeymen start at \$42.

Benefits

Health and pension plans.

Contact

Electrical Training Institute

Diana Limon, Training Director
director@laett.com

6023 S. Garfield Ave.
City of Commerce, CA 90040
Phone: (323) 221-5881
Fax: (323) 721-6522

<http://www.laett.com>



When To Apply

Anytime at: <https://applications.laett.com>

Length of Program

Typically, during the term of your apprenticeship you will work 8,000 hours on-the-job for a five-year program with various electrical contractors. In addition, you will attend school for 1,200 hours during the five-year period. Wages start at a percentage of full journeyman pay and increase in increments through graduation to full pay.

Requirements

Algebra is a requirement. Either one year of high school algebra with a C or better or one semester of college algebra with a C or better. Also, a current, valid ID is needed to apply, and a driver's license is strongly recommended.

Must be able to handle ladder and scaffold climbing; pulling; crawling; crouching; and working in cramped or confined quarters; and lifting 25- to 50-pound objects on a fairly constant schedule. The individual must also possess the comprehensive ability to follow specific instructions.

Union

International Brotherhood of Electrical Workers
Local 11

Floor Layer

Skills To Be Learned

Floor layers install artificial turf, carpet, linoleum, soft tile, rubber tile, laminate flooring, vinyl composition tile, sheet vinyl, and a variety of specialized flooring. Floor layer installers work with many sharp knives and other cutting tools, so there is always the danger of serious cuts. Lifting heavy loads such as rolls of carpet or sheet vinyl and bending, stretching, and reaching in awkward positions can cause back problems. Hazardous Communication Training teaches apprentices how to safely work with hazardous substances, which are found in some adhesives.

Wages

Hourly wages for entry-level apprentices start at \$14, total package \$12.86. Hourly wages for journeymen are \$31.10, total package \$41.61.

Benefits

Health and welfare, plus pension plans.

Contact

Floor Layer Training

Sean Padilla, Training Coordinator

7020 E. Slauson Ave.

Commerce, CA 90040

Phone: (562) 623-9244

Fax: (562) 623-9344

<http://www.dc36.org>

When To Apply

Please call for details.

Length of Program

During the term of your apprenticeship, you will work a total of 6,032 on-the-job learning hours for 10 periods and 160 hours of related learning classes. You will also attend 144 hours of supplemental related training classes per year for three years at our training center.

Requirements

Applicants must be at least 18 years of age; 17 with a guardian's written permission. There is no age cap.

Union

Local Union 1247 under IUPAT and DC 36



Glazier

Skills To Be Learned

Glazier, architectural metal, and glass workers are individuals who work with glass and architectural metal. They fabricate aluminum (or other related metals) that are used in the construction of buildings or storefronts. From the sill flashing to the top of the parapet cap on high-rise buildings is where you will find us. If there are glass or glass products used, a glazier has been there.

Wages

Hourly wages for entry-level apprentices start at \$16.71 plus vacation pay. Hourly wages for journeymen are \$41.70.

Benefits

Our program is sponsored by the Glaziers Architectural Metal and Glass Workers Union. As an employee and union member, you will be afforded excellent medical, dental, and optical coverage as well as pension plan benefits.

Contact

Glazier Training Institute

Tawny Castro, Coordinator

1481 S. Balboa Ave.
Ontario, CA 91761
Phone: (909) 786-0630
Fax: (909) 947-8169

<http://www.dc36.org>

When To Apply

Call for appointment (714) 894-4094, ext. 19.

Length of Program

During the term of your apprenticeship, you will work a total of 8,000 on-the-job training hours, and six semesters of 160 RSI hours a year.

Requirements

Applicants must be at least 18 years of age; have a driver's license and social security card; and have a high school diploma, GED, or equivalent.

Must be able to pass a basic math test with a 70% grade.

Also, must be able to do physical construction labor, and not be afraid of heights.

Union

International Union of Painters and Allied Trades (IUPAT) District Council Local Union 636
Glaziers



Heat and Frost Insulator/ Asbestos Worker

Skills To Be Learned

The function of an insulator is to insulate mechanical systems, whether hot or cold, from ambient temperatures. Any surfaces having low, medium, or high temperatures, such as boilers, refrigeration units, furnaces, heat exchangers, pipes, and tanks, found in powerhouses, refineries, aboard ships, and in high-rise buildings, will be insulated by our mechanics for process control, fire protection, personnel protection, or sound reduction. After the insulation has been applied, protective covers, coatings, and jacketing are also fabricated and installed.

Wages

Hourly wages for entry-level apprentices start at \$15.64. Hourly wages for journeymen start at \$38.37 hourly.

Benefits

Health and welfare, plus pension plans.

Contact

Southern California Heat and Frost Insulators and Asbestos Workers Joint Apprenticeship Committee

Lupe Moreno, Administrator/Training Director
3833 Ebony St.
Ontario, CA 91761
Phone: (909) 390-7002
Fax: (626) 334-7042

When To Apply

Applications are given out quarterly on the first Monday of each month (January, April, July, October) at 8 a.m. Anyone who arrives after 9 a.m. will be asked to come back at the next quarter's application period.

Length of Program

To complete the program, apprentices must work 8,000 hours or five years on the job, rotating through various work processes. Apprentices must also attend at least 800 hours of related supplemental instruction.

Requirements

Applicants must be at least 18 years of age, with a high school diploma or GED certificate, and must have a valid California driver's license and social security card.

Union

International Association of Heat and Frost Insulators and Allied Workers Local 5



Laborer

Skills To Be Learned

The skills required are varied. A construction craft laborer will do some or all of the following: pour concrete, pave roads with asphalt, lay pipe for sewers, work on demolition projects, perform environmental abatement, and other tasks, as required. The work is physically demanding and the hours can be long but the rewards are plentiful.

Wages

Starting wages are 50% of the journeyman level wages. Hourly pay raises are awarded after completing 500-hour increments of on-the-job training. Hourly wages for entry-level apprentices start at \$17.67. Hourly wages for journeymen start at \$32.34.

Benefits

Health and welfare, vacation, and pension plans.

Contact

The Laborers Training School

Fred Furrer, Curriculum and Instructor Development

1385 W. Sierra Madre Ave.

Azusa, CA 91702

Phone: (877) 445-2094 or (626) 610-1700

Fax: (626) 633-0204 or (626) 633-0205

www.laborerstrainingschool.com

When To Apply

Request an application by calling the apprenticeship office.

Length of Program

The 18-month training program requires 3,000 hours of on-the-job training, including 36 hours of classroom instruction.

Requirements

Must be at least 18 years of age and physically able to perform the work.

Union

Southern California District Council of Laborers, including Locals 89, 220, 300, 507, 585, 652, 783, 802, and 1184



Landscape and Irrigation Fitter

Skills To Be Learned

Apprentices are required to use picks and shovels at times. Work may include installing metal and cement pipes and tubing. Apprentices may layout water pipes, tubing, water irrigation, and drainage systems. Apprentices will also measure cuts, thread water pipes, and joint plastic pipes with glue.

Wages

Hourly wages for entry-level apprentices start at \$14.17. Hourly wages for journeymen start at \$30.53

Benefits

Health and welfare, pension plans, dental care, vacation, and retirement.

Contact

South California Landscape and Irrigation Fitter Apprenticeship Local 345

1430 Huntington Drive
Duarte, CA 91010
Phone: (626)-357-9345
Fax: (626) 359-0359

When To Apply

Monday through Friday, 8 a.m. to 11 a.m.

Length of Program

The Apprenticeship Program is a five-year training program. Apprentices must complete 144 hours of classroom instruction (10 semesters) to graduate from the program. Apprentices must also complete a total of 7,500 hours of on-the-job training to become a journeyman.

Requirements

Applicant must be at least 18 years of age and be able to speak English or be willing to take English classes. The applicant must also be able to work under the supervision of a journeyman and be physically able to perform the work of the trade. Finally, the applicant must abide by all rules and regulations set by the Joint Apprenticeship Training Committee.

Union

United Association of Journeyman and Apprentices of the Plumbing and Pipe Fitting Industry Local 345

Operating Engineer

Skills To Be Learned

Operating engineers are highly trained, skilled professionals who operate heavy construction equipment on high-rise buildings, roads and freeways, residential developments, dams, waterways, airports, and underground tunnels. Operating engineers may perform specialized work operating cranes, concrete pumping, pile driving, and drilling equipment. Operating engineers can either become heavy duty repairers for construction equipment or construction inspectors to examine compliance of blueprints and plans.

Wages

Hourly wages for entry-level apprentices start at \$26.78. Hourly wages for journeymen start at \$41.85.

Benefits

Health and welfare, plus pension plans.

Contact

Operating Engineers Training Trust

Daryl Sundberg, Apprentice Coordinator
dsundberg@oett.net

2190 S. Pellissier Place
Whittier, CA 90601
Phone: (562) 695-0611

When To Apply

Apprenticeship applications are now closed and will reopen in 2022.

Length of Program

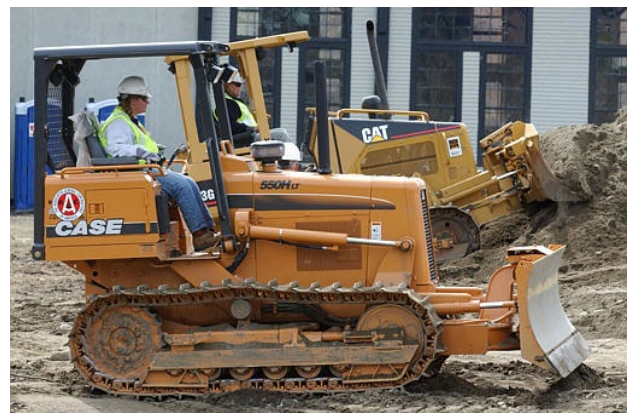
The three-year program requires 6,000 hours of on-the-job training and six semesters of classroom instruction.

Requirements

Must be 18 years of age, with a high school diploma or GED certificate. Applicants must be able to read, write, or speak English in order to comprehend training instructions as well as to ensure personal and co-worker on-site safety. An applicant must complete all application forms and provide evidence of legal employable status in the United States. Must have a driver's license upon admission into the program and have suitable transportation to and from work and school. Must reside within the local jurisdiction of Local 12 in Southern California. Must also pass an entrance examination and a substance abuse test.

Union

International Union of Operating Engineers Local 12



Painter

Skills To Be Learned

Painting is the application of paint, varnishes, lacquers, sealers, stains, etc. Painters also apply all types of wallpaper, vinyl wall fabrics, coverings, and coatings. Painters make all the necessary preparations prior to application. Work will be performed on all types of buildings, both interior and exterior.

Wages

Hourly wages for entry-level apprentices start at \$13.38. Hourly wages for journeymen start at \$31.12.

Benefits

The painters program is jointly sponsored by the Trust Fund. As an employee and union member, you will be afforded excellent medical, dental, and optical coverage as well as vacation and pension plan benefits.

Contact

Painting

Alfonso Carrillo, Paint Coordinator

7020 E. Slauson Ave.
Commerce, CA 90040
Phone: (323) 727-2811
Fax: (323) 727-1180

When To Apply

Applications are accepted on an ongoing basis.

Length of Program

During the term of your apprenticeship you will work a total of 7,870 hours on the job. Your training will be broken into 10 periods with various employers. You will also attend supplemental related training classes of 144 hours per year for three years at our training center.

Requirements

Applicants must be at least 18 years of age; 17 with a guardian's written permission. There is no age cap.

Applicants must have a copy of their high school diploma or GED. In some programs, applicant must pass a basic aptitude test. Applicant must be able to pass a color blindness test.

Union

International Union of Painters and Allied Trades (IUPAT)



Pile Driver, Bridge, Wharf, and Dock Builder

Skills To Be Learned

This trade specializes in constructing bridges, marine structures, foundations, retrofit work, welding, and deep sea construction. Work skills can include carpentry, deep sea diving, welding, rigging, manual labor, and technical skills. Southern California and southern Nevada are the geographical contract service areas for membership.

Wages

Hourly wages for entry-level apprentices start at \$16.21. Hourly wages for journeymen start at \$40.53.

Benefits

Health and welfare, with medical and dental plans per work hour contribution. Pension plans provided with prorated pay for yearly hours worked.

Contact

Southern California Pile Drivers Joint Apprenticeship and Training Program

When To Apply

First Wednesday of every month at 8 a.m.

Length of Program

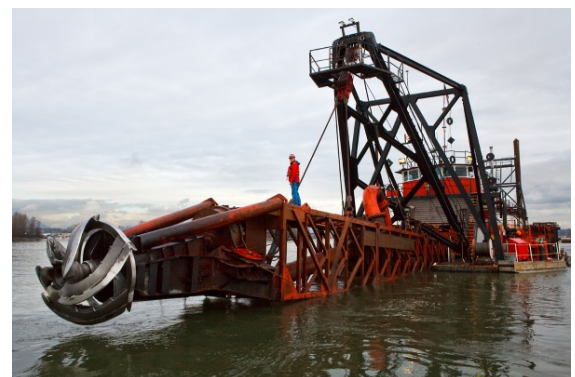
The four-year program requires 4,800 hours of on-the-job training and 612 hours of classroom training.

Requirements

Must be at least 17 years of age, with a high school diploma or GED certificate. Must also be in good physical health and be able to perform physical duties and comprehend instruction. Must have driver's license or birth certificate with a social security card or immigration registration card. Must furnish own tools and have reliable transportation to work and school.

Union

Union Pile Drivers, Bridge, Wharf, and Dock Builders Local 2375 (Dissolved)



Plumber

Skills To Be Learned

Apprentices will learn to lay out, assemble, install, repair, and maintain fittings and fixtures for air, gas, water, steam, and waste disposal systems.

Wages

Hourly wages for entry-level apprentices start at \$21.10. Hourly wages for journeymen start at \$46.03.

Benefits

Health and welfare, vacation, and pension plans.

Contact

Los Angeles Metropolitan Plumbers Joint Apprenticeship Training Committee

Jeremy Diaz, Apprenticeship Coordinator
Phone: (213) 688-9090, ext. 1006

1111 W. James M. Wood Blvd.
Los Angeles, CA 90015
Phone: (213) 688-9090
Fax: (213) 627-4624
<http://uaplumber78.com>

When To Apply

Monday through Thursday, 7:30 a.m. to 11:30 a.m.

Length of Program

The five-year program requires 1,500 hours of on-the-job training, per year, totaling 7,500 hours in five years.

Requirements

Must be 18 years of age, with a high school diploma or GED certificate. Must have a valid California driver's license, social security card, and appropriate INS work authorization documents.

Union

Plumbers Local 78



Refrigeration and Air Condition Fitter

Skills To Be Learned

Apprentices will learn to install, test, service, repair, and overhaul refrigeration and air conditioning systems in commercial, industrial, and public buildings.

Wages

Hourly wages for entry-level apprentices start at \$21.93. Hourly wages for journeymen start at \$43.90.

Benefits

Health and welfare, plus pension plans.

Contact

L.A. and Orange Counties Air Conditioning and Refrigeration Joint Journeymen and Apprenticeship Training Center

2220 S. Hill St.
Los Angeles, CA 90007-1441
Phone: (213) 747-0291

When To Apply

Every Friday from 8 a.m. to 11 a.m. (in person).

Length of Program

The five-year program requires 1,800 hours of on-the-job training and three hours of classroom instruction twice a week each year.

Requirements

Must be at least 18 years old. Must have either completed and passed 10 credits of high school level or three units of college level algebra, geometry, or received a certificate of completion or associate of science degree in air conditioning and refrigeration from a JJATC/JAC approved community college, trade, or technical school.

Union

Local Union 250 AFL1CIO Steam Refrigeration and Air Conditioning-Pipe Fitters and Apprentices of the United Association



Reinforcing Ironworker

Skills To Be Learned

Fabricate and place steel bars (rebar) in concrete forms to reinforce structures. Place rebar on appropriate supports and tie them together with tie wire. Install post-tensioning tendons (cables) to place in concrete forms along reinforcing steel. Stress the tendons using hydraulic jacks and pumps after the concrete is poured and hardened. Load, unload, move, and set reinforcing steel. Have knowledge of fiber line, wire rope, hoisting equipment, and proper hand signals.

Wages

Apprentices wages begin at 50% of journeyman rate. Hourly wages for entry-level apprentices start at \$20.50. Hourly wages for journeyman start at \$41.

Benefits

Vacation pay, annuity, pension, health, and welfare benefits.

Contact

Ironworkers Joint Apprenticeship Training Center

Brad Huth, Apprenticeship Coordinator

5555 Fresca Drive

La Palma, CA 90623

Phone: (714) 228-9744

Fax: (714) 228-9750

www.universityofiron.org

When To Apply

Thursdays, 1 p.m. to 3 p.m.

Length of Program

The four-year program requires 5,600 hours of on-the-job training, 200 hours per year, in four years.

Requirements

Must be 18 years of age with a high school diploma or GED certificate. Must present proof of age, social security card, high school diploma, GED, or DD-214 showing completion.

Union

International Association of Bridge, Structural, Ornamental, and Reinforcing Ironworker Locals 416



Rofer and Waterproofer

Skills To Be Learned

Apprentices will learn to prepare and apply protective coverings, such as shakes, asphalt, felt, tar, gravel, metal, and composition shingles, to the roofing/waterproofing surfaces of a building. Apprentices will also learn to inspect problem roofs to determine whether the best procedure is to repair or replace the roof surface. Apprentices will also learn the entire roofing and waterproofing envelope system covering the migration of all moisture penetrations in all structures and building.

Wages

Hourly wages for entry-level apprentices start at \$19.94. Hourly wages for journeymen start at \$36.12.

Benefits

Health coverage, vacation, and pension.

Contact

Southern California Roofers and Waterproofers Joint Apprenticeship and Training Committee

Lupe Corral, Apprenticeship Coordinator
1315 E. Grand Ave.
Pomona, CA 91766
Phone: (909) 469-9847

When To Apply

Monday through Friday, 9 a.m. to 3 p.m.

Length of Program

The three-year program requires 5,250 hours of on-the-job training and 144 hours of classroom instruction per year.

Requirements

Must be 18 years of age and pass the oral interview. Verification of a high school diploma or GED certificate. Must also be able to read, speak, and write English. Applicants must be prepared to work at extreme heights and on sloping surfaces. Applicants must be prepared to lift heavy materials and equipment in all types of weather. Applicants must be prepared to purchase tools and equipment at an estimated cost of \$150.

Union

United Union Roofer, Waterproofer, and Allied Workers Locals 36 and 220



Sheet Metal Worker

Skills To Be Learned

Apprentices will learn how to make and install ductwork, welding, and architectural sheet metal. Apprentices will also learn how to balance an air conditioning system as well as drafting, reading blueprints, and designing duct systems.

Wages

Hourly wages for entry-level apprentices start at \$16.74. Hourly wages for journeymen start at \$41.86.

Benefits

Health and welfare, plus a 401A plan.

Contact

Southern California Sheet Metal JATC

633 N. Baldwin Park Blvd.
City of Industry, CA 91746
Phone: (626) 968-3340
Fax: (626) 968-3379

<http://www.socalisma.org>

When To Apply

Monday through Friday 8 a.m. to 4 p.m.

Length of Program

The program is five years, consisting of ten six-month periods.

Requirements

Must be at least 18 years of age. The applicant is required to take and pass a fifteen-minute timed test to measure an individual's ability to perform operations ranging in difficulty from simple counting to intermediate algebra. The applicant is required to take and pass a written test, which is divided into three sections: a mental ability test, a comprehension test, and a paper board test.

Union

Sheet Metal Workers International Local 105



Steam Fitter/Pipe Fitter

Skills To Be Learned

Apprentices will learn how to make, install, repair, and maintain low- and high-pressure steam, hot water, and gas piping systems, and various types of process piping systems found in industrial operations, such as oil refineries, pipelines, power plants, and pulp mills.

Wages

Hourly wages for entry-level apprentices start at \$21.09. Hourly wages for journeymen are \$46.88.

Benefits

Health and dental care, vacation, and pension plans.

Contact

Joint Journeymen and Apprenticeship Training Center

18355 S. Figueroa St.
Gardena, CA 90248
Phone: (310) 323-4475

Herb M. Kleeman, JAC Secretary
Phone: (310) 660-0035, ext. 3311

When To Apply

On the first and third Thursday of each month unless otherwise specified.

As of July 1, 2019, applications are on a freeze until further notice. Visit the website for possible updates on new application dates.

Length of Program

The five-year program requires 1,500 hours of on-the-job training annually and a minimum of 216 hours of classroom instruction per year.

Requirements

Must be at least 18 years of age, with a high school diploma or GED certificate. It is highly recommended that applicants complete one full year of high school algebra, with a passing grade of C or better, or one post-high school algebra course with a passing grade of C or better.

Union

Steam-Refrigeration-Air Conditioning Pipefitters and Apprentices of the United States and Canada Local 250



Structural Ironworker

Skills To Be Learned

Structural, ornamental, riggers unload, erect, connect, and weld fabricated beams to form the project skeleton. Work is primarily on industrial, commercial, and residential buildings. Build towers, bridges, stadiums, and pre-fabricated metal buildings. Erect and install pre-cast beams, columns, and panels. Install metal windows onto buildings and on a building's masonry or wooden openings. Erect curtain wall and window wall systems that cover the steel or the reinforced concrete structure of a building. Install and erect metal stairways, catwalks, grating, doors, railings, fencing, elevator fronts, and building entrances.

Wages

Hourly wages for entry-level apprentices start at \$18. Hourly wages for journeymen start at \$36.

Benefits

Apprentices wages begin at 50% of journeyman rate. Along with vacation pay, annuity, pension and health, and Welfare benefits.

Contact

Ironworkers Joint Apprenticeship Training Center

Brad Huth, Coordinator

5555 Fresca Drive
La Palma, CA 90623
Phone: (714) 228-9744
Fax: (714) 228-9750

www.universityofiron.org

When To Apply

Wednesdays from 1 p.m. to 3 p.m.

Length of Program

Apprenticeship is served for a four-year period, which includes a minimum of 200 hours per year of related classroom instruction and 5,600 hours on-the-job-training.

Requirements

Must be 18 years of age, with a high school diploma or GED certificate. Must present proof of age, high school diploma, GED, or DD-214 showing completion.

Union

International Association of Bridge, Structural, Ornamental, and Reinforcing Ironworker Locals 433



Sound and Communication

Skills To Be Learned

Apprentices will learn to install, maintain, and repair all sound communications, data, fire alarm, and security systems.

Wages

Hourly wages for entry-level apprentices start at \$14.59. Journeymen system installers earn \$27.25, and journeymen system technicians earn \$29.05 hourly.

Benefits

Health and pension plans.

Contact

Electrical Training Institute

Diana Limon, Training Director

6023 S. Garfield Ave.

City of Commerce, CA 90040

Phone: (323) 221-5881

Fax: (323) 721-6522

www.laett.com

When To Apply

In response to the COVID-19 pandemic, the ETI will temporarily halt acceptance of apprenticeship applications through September 30, 2020.

Length of Program

System installers have a three-year program that requires 4,800 hours on-the-job training, including six semesters of classroom instruction. System technicians have a four-year program that requires 6,000 hours of on-the-job training, in addition to eight semesters of classroom instruction.

Requirements

Must be at least 18 years of age, with a high school diploma or GED certificate. If the applicant doesn't have algebra, they must take the entrance exam. If they have the algebra, they can waive the test.

A current valid ID is required and a driver's license is strongly recommended.

Surveyor

Skills To Be Learned

Apprentices will learn blueprint and map reading, calculations of bearings, azimuths, coordinates, distance, and elevations. The field procedures require the performance of various field surveys from rough layout to precise legal descriptions of property, simple construction, and complex projects.

Apprentices will also learn the proper use of various hand and power tools.

Wages

Hourly wages for entry-level apprentices start at \$18.32. Hourly wages for journeymen start at \$43.63.

Benefits

Health and welfare, plus pension plans.

Contact

Southern California Surveyors Joint Apprenticeship Committee

Roger Fernandez, Coordinator

9480 Utica Ave., Suite 604
Rancho Cucamonga, CA 91730
Phone: (909) 243-7973
Email: office@scsurveyjac.org
www.scsurveyjac.org

When To Apply

Office hours Monday through Friday, 8 a.m. to 5 p.m. **Applications are currently closed.** For more information, visit www.scsurveyjac.org.

Length of Program

The three-year program requires 6,000 hours of on-the-job training and five semesters of classroom instruction.

Requirements

Must be 18 years of age, with a high school diploma or GED certificate. Must also be able to read, write, and speak English. It is required to obtain a passing score (75% or higher) on the Surveyors Joint Apprenticeship Qualifications Test.

Union

International Union of Operating Engineers Local 12



Tile Finisher and Marble Finisher

Skills To Be Learned

Apprentices will learn how to mix construction materials for setters and prepare area for installation. Apprentices will also learn how to grout, clean and polish, and repair and restore.

Wages

Hourly wages for entry-level apprentices start at \$14.47. Hourly wages for journeymen start at \$24.56.

Benefits

Health and welfare, plus pension plans.

Contact

Tile Marble Finishers Joint Apprenticeship and Educational Committee

Andy Gerber, Coordinator

2679 Sierra Way, Suite E
La Verne, CA 91750
Phone: (626) 329-0850
Fax: (626) 329-0854

www.bac4ca.org/tile-layer-tilemarble-finisher-terrazzo-apprentice-program

When To Apply

Monday through Thursday, 7 a.m. to 11 a.m.

Length of Program

The two-year program requires 4,000 hours of on-the-job training and a minimum of 288 hours of classroom instruction.

Requirements

Must be 17 years of age (with parent/guardian consent) and have a high school diploma or GED certificate. Applicants must show proof of passing ninth-grade mathematics. Applicants must also be free from physical handicaps that may deter their performance of work in this trade. No physical exam is required.

Union

Tile, Marble, and Terrazzo Workers Local 18
California



Transportation Systems

Skills To Be Learned

Apprentices will learn to install, maintain, and repair many types of electrical equipment and electronic systems in traffic control, street lighting systems, and smart freeways. Apprentices will also learn to install, connect, and test electrical wiring systems for light, power, and communications (data) in traffic control and street lighting systems.

Wages

Hourly wages for entry-level apprentices start at \$16.90. Hourly wages for journeymen start at \$42.25.

Benefits

Health and pension.

Contact

Electrical Training Institute

Diana Limon, Training Director

6023 S. Garfield Ave.
City of Commerce, CA 90040
Phone: (323) 221-5881
Fax: (323) 721-6522
<http://www.laett.com>

When To Apply

In response to the COVID-19 pandemic, the ETI will temporarily halt acceptance of apprenticeship applications through September 30, 2020.

Length of Program

The four-year program requires 7,200 hours on-the-job training and eight semesters of supplemental classroom training.

Requirements

Algebra is strongly recommended but not required to apply for the program. **Driver's license is required with no more than 1 point on the driver's license.**

Union

International Brotherhood of Electrical Workers
Local 11

